



OUR SERVICES

We specialize in working with students and families within area school districts to improve the quality of life for individuals and their families.

We service individuals who struggle with a wide-range of concerns, including:

- Autism
- Chronic Illnesses
- Cognitive Disabilities
- Concussion & Brain Injuries
- Developmental Disorders
- Emotional & Psychological Issues
- Executive Functioning Challenges
- Genetic Disorders
- Learning Disabilities
- Seizure Disorders
- Stroke

CHSD218 serving ...

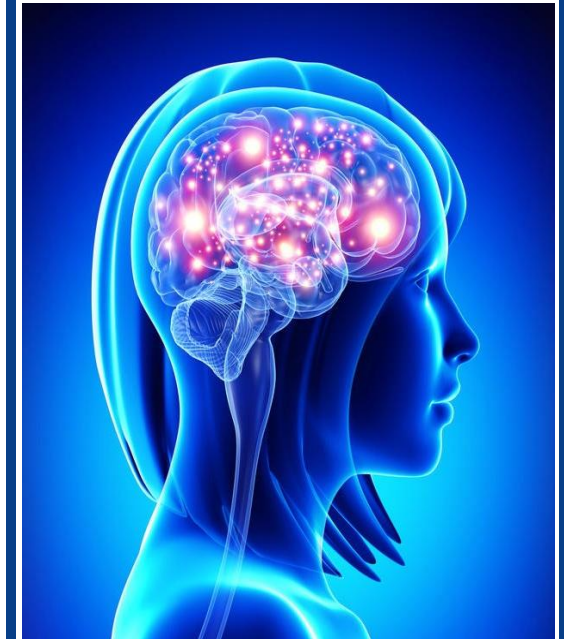


WEBSITE

<http://www.chsd218.org/apps/pages/inspireclinic>

The INSPiRE

Neuropsychology Clinic



CHSD 218
Administrative Center
10701 S. Kilpatrick Ave.
Oak Lawn, IL 60453

Phone: 708.572.9425

Child Neuropsychology

Child Neuropsychology is a specialized area of assessment and treatment that assists us in understanding how the brain is involved in academics, emotions, and behavior.

Neuropsychological assessment includes psychological evaluation, assessment of thinking and learning skills, as well as assessment of academic skills.

The INSPiRE Neuropsychological Clinic provides services under the supervision of highly qualified licensed clinical psychologists, doctoral-level school psychologists, and doctoral interns with extensive training in child neuropsychology and school psychology.



INSPiRE MISSION

To provide educationally-focused neuropsychological assessment, counseling, and advocacy for schools, students, and families.

How to Refer to INSPiRE

Students in CHSD 218 and Partner Cooperatives:

A referral can be made by a school psychologist or building administrator. If you would like to inquire about our services, contact the student's home school psychologist for a referral. Services are free to in-district students.

Students who attend schools outside of CHSD 218:

Students and parents requesting Independent Educational Evaluations can contact us directly to initiate services. These types of referrals are subject to the general fee schedule as outlined.

FEES

Neuropsychoevaluational assessment & report (up to 20 hours).....	\$1500
Post-assessment feedback session with guardians or schools	\$300
Consultations, counseling, additional assessment hours & follow-up services	\$75/per hour
Mileage	54¢/per mile

Please note exact costs are determined upon receipt of the referral, prior to the initiation of services.

