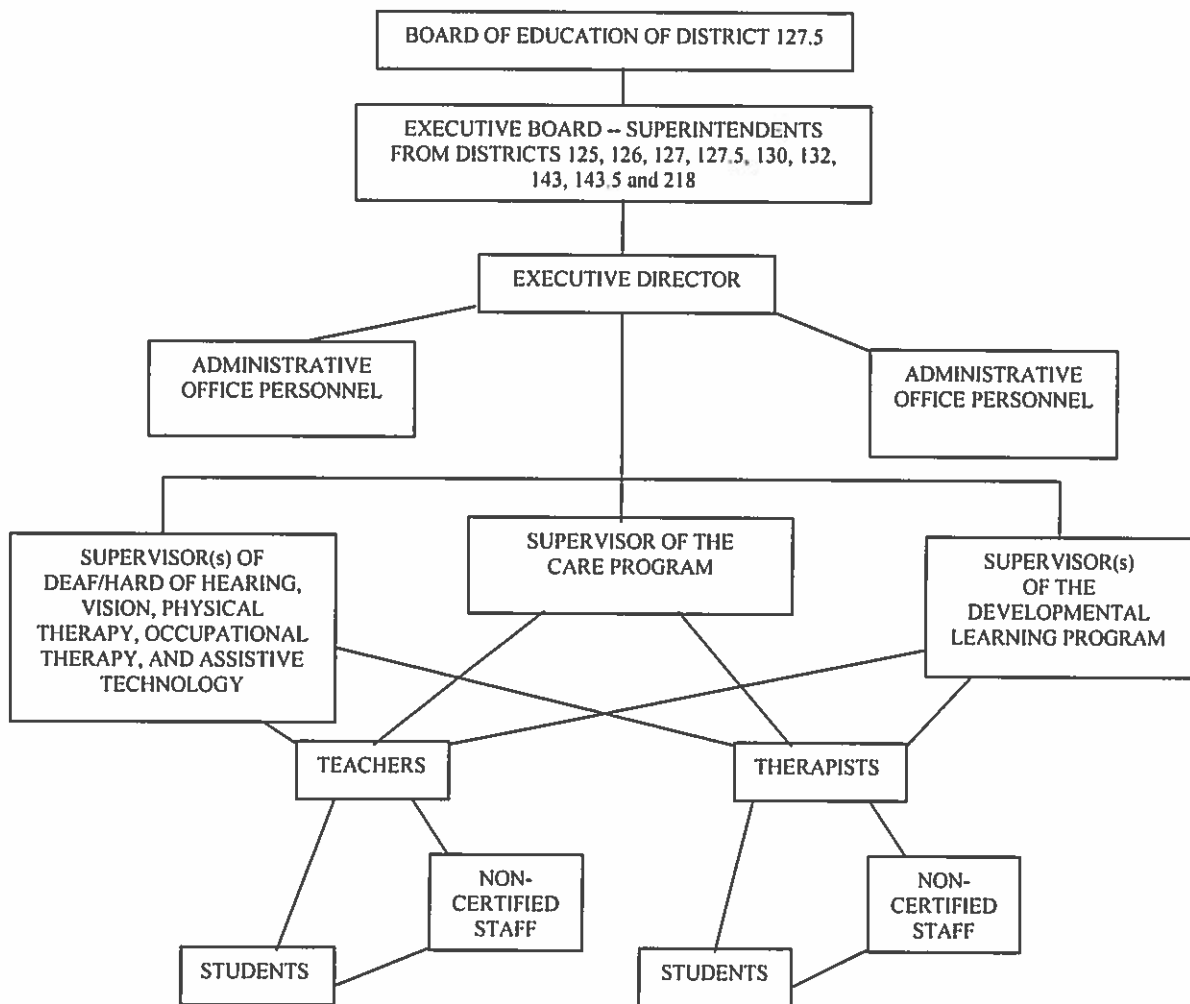


## Cooperative Organization

### Cooperative Organization, Operations, and Agreements

Refer to Appendix A for the “Amended Joint Agreement to Establish a Program of Curriculum Articulation and Special Education for Schools within the Boundaries of Community High School District 218”

The Cooperative is organized and operates as follows:



The District participates in the following joint programs:

Educational Benefit Cooperative (EBC)

Collective Liability Insurance Cooperative

ADOPTED: March 21, 2000

ADOPTED (REVISION): August 29, 2017